

SpiroConnect Settings and Database Tech Tip

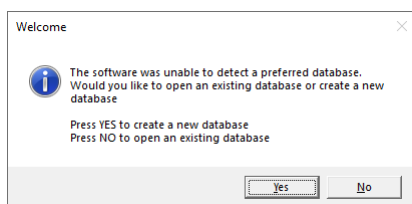
The settings within SpiroConnect Data Manager are set on a Windows user basis. When we install the software we attempt to copy the settings to all the users on the PC however occasionally this doesn't work due to local IT restrictions. Therefore, in those situations, each user will need to configure SpiroConnect Data Manager before they use SpiroConnect for the first time.

Please note that these settings should be classed as the minimum required to perform and interpret spirometry, however, you can adjust these to your clinical requirements as needed.

To launch SpiroConnect Data Manager please double-click on this icon located on the desktop.



1. When the software opens, you get a message stating that the software was unable to select a database. Choose No to open an existing database. If this doesn't appear go to step 3.



DEDICATION • INNOVATION • TRUST

Alliance House, Roman Ridge Road, Sheffield, S9 1GB Telephone: 0114 243 3896 Fax: 0114 243 3413

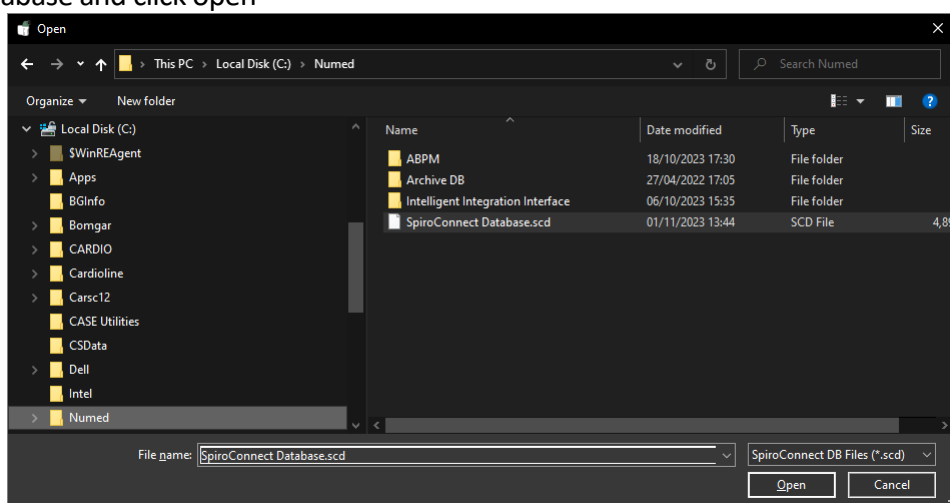


www.numed.co.uk



info@numed.co.uk

2. We would normally keep the database named SpiroConnect Database.scd in the default location chosen by the software however you can store this on a network drive as well. Once located select the database and click open



3. To access the configuration please click Settings



DEDICATION • INNOVATION • TRUST

Alliance House, Roman Ridge Road, Sheffield, S9 1GB Telephone: 0114 243 3896 Fax: 0114 243 3413



www.numed.co.uk



info@numed.co.uk

Numed Holdings Limited T/A Numed Healthcare, Company Reg No 01302868

Directors: M K Healy & S J Healy

4. Configure the Display as shown

Settings

Display | Spirometry 1/2 | Spirometry 2/2 | Parameters | Spirometry Printout | ArtiQ

Display Settings

Language: English

Date Display Format: European (DD/MM/YYYY)

Date Display Separator: Slash (/)

Height Units: cm

Weight Units: kg

Flow Units: L/min

OK Cancel

DEDICATION • INNOVATION • TRUST

Alliance House, Roman Ridge Road, Sheffield, S9 1GB Telephone: 0114 243 3896 Fax: 0114 243 3413



www.numed.co.uk



info@numed.co.uk

Numed Holdings Limited T/A Numed Healthcare, Company Reg No 01302868
Directors: M K Healy & S J Healy

5. Spirometry 1/2

Settings

Display | **Spirometry 1/2** | Spirometry 2/2 | Parameters | Spirometry Printout | ArtiQ

Spirometry Settings 1/2

Predicted Value Set: GLI Quanjer (2012) 3-95 years [PEF: ECCS/Polgar]

Forced Best Test Criteria: This is pre-set to FEV1 + FVC. Interpretation is always based on the best results from all available tests in accordance with ATS/ERS guidelines.

Acceptance Criteria: ATS/ERS 2019

Interpretation Scheme: ATS/ERS 2019

Graphs Predicted Value Area/Line Display: Area

☒ Record unit calibration details in Exam Notes

☒ Display FEVx for blows less than x seconds

☐ Present "Is Patient on bronchodilator(s)?" prompt

☐ Show "%Chg vs PRED" Column (for Bronchodilator Response)

☐ Show "Percentile" Column

☒ Expiratory Only Mode

MVV(lnd) Multiplication Factor: 35

Child Incentive Animation: Skyscraper

Incentive Target

1st Test: 95 % of Predicted FVC

Subsequent Tests: 103 % of Best FVC

Trend Graph: Default Display Type: Measured Values

OK Cancel

DEDICATION • INNOVATION • TRUST

Alliance House, Roman Ridge Road, Sheffield, S9 1GB Telephone: 0114 243 3896 Fax: 0114 243 3413



www.numed.co.uk



info@numed.co.uk

Numed Holdings Limited T/A Numed Healthcare, Company Reg No 01302868

Directors: M K Healy & S J Healy

Settings

Display Spirometry 1/2 Spirometry 2/2 Parameters Spirometry Printout ArtiQ

Spirometry Settings 1/2

Acceptance Criteria ATS/ERS 2019

Interpretation Scheme ATS/ERS 2019

Graphs Predicted Value Area/Line Display Area

☒ Record unit calibration details in Exam Notes

☒ Display FEVx for blows less than x seconds

☐ Present "Is Patient on bronchodilator(s)?" prompt

☐ Show "%Chg vs PRED" Column (for Bronchodilator Response)

☐ Show "Percentile" Column

☒ Expiratory Only Mode

MVV(Ind) Multiplication Factor: 35

Child Incentive Animation Skyscraper

Incentive Target

1st Test 95 % of Predicted FVC

Subsequent Tests 103 % of Best FVC

Trend Graph: Default Display Type: Measured Values

Trend Graph: Show Stage: All Test Stages

Trend Graph: ☐ Show Only 'Criteria Met' Exams

Trend Graph: ☒ Show FEV1 ☒ Show FVC ☒ Show PEF ☒ Show FEV1/FVC

OK Cancel

DEDICATION • INNOVATION • TRUST

Alliance House, Roman Ridge Road, Sheffield, S9 1GB Telephone: 0114 243 3896 Fax: 0114 243 3413



www.numed.co.uk



info@numed.co.uk

Numed Holdings Limited T/A Numed Healthcare, Company Reg No 01302868

Directors: M K Healy & S J Healy

6. Spirometry 2/2

Settings

Display Spirometry 1/2 Spirometry 2/2 Parameters Spirometry Printout ArtiQ

Spirometry Settings 2/2

Uncheck to disable Quality Check:

- ☒ Hesitant Start - Blast out immediately when completely full
- ☒ No Plateau - Keep going until completely empty
- ☒ Possible Cough - Try having a sip of water before the next blow
- ☒ Slow Start - Blast out immediately when completely full
- ☐ Hesitation at Max Volume - Blast out when completely full
- ☐ Incomplete Insp before Exp - Fill your lungs completely before blasting out - take the deepest breath possible
- ☐ Low Final Inspiration - After completely emptying your lungs, remember to breathe in - back to the top
- ☐ Slow Filling - Breathe in faster before blasting out

OK Cancel

DEDICATION • INNOVATION • TRUST

Alliance House, Roman Ridge Road, Sheffield, S9 1GB Telephone: 0114 243 3896 Fax: 0114 243 3413



www.numed.co.uk

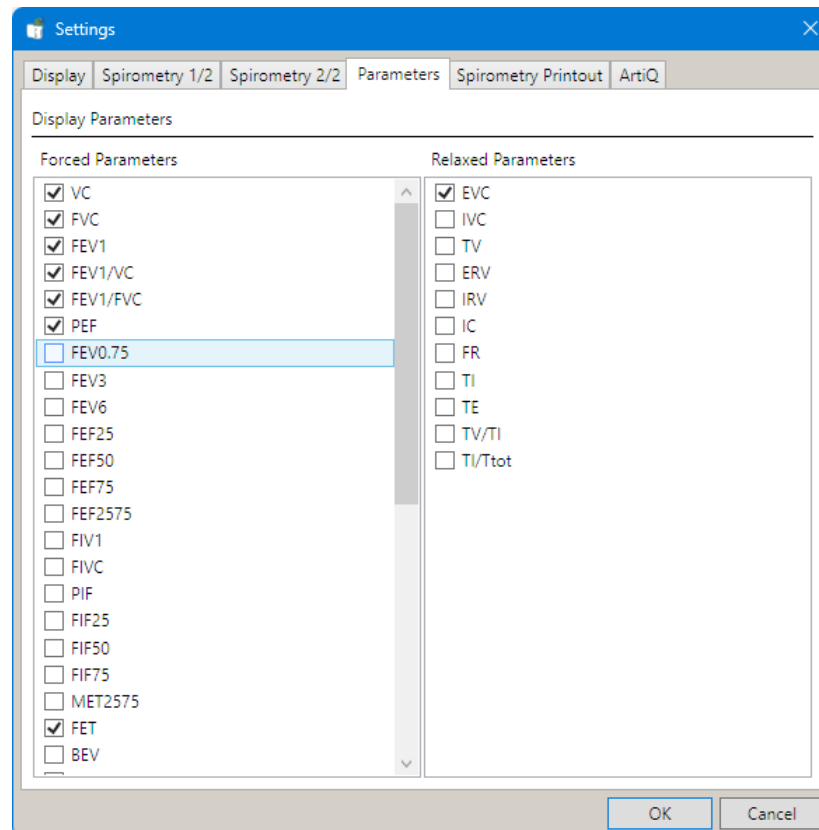


info@numed.co.uk

Numed Holdings Limited T/A Numed Healthcare, Company Reg No 01302868

Directors: M K Healy & S J Healy

a. Parameters



DEDICATION • INNOVATION • TRUST

Alliance House, Roman Ridge Road, Sheffield, S9 1GB Telephone: 0114 243 3896 Fax: 0114 243 3413



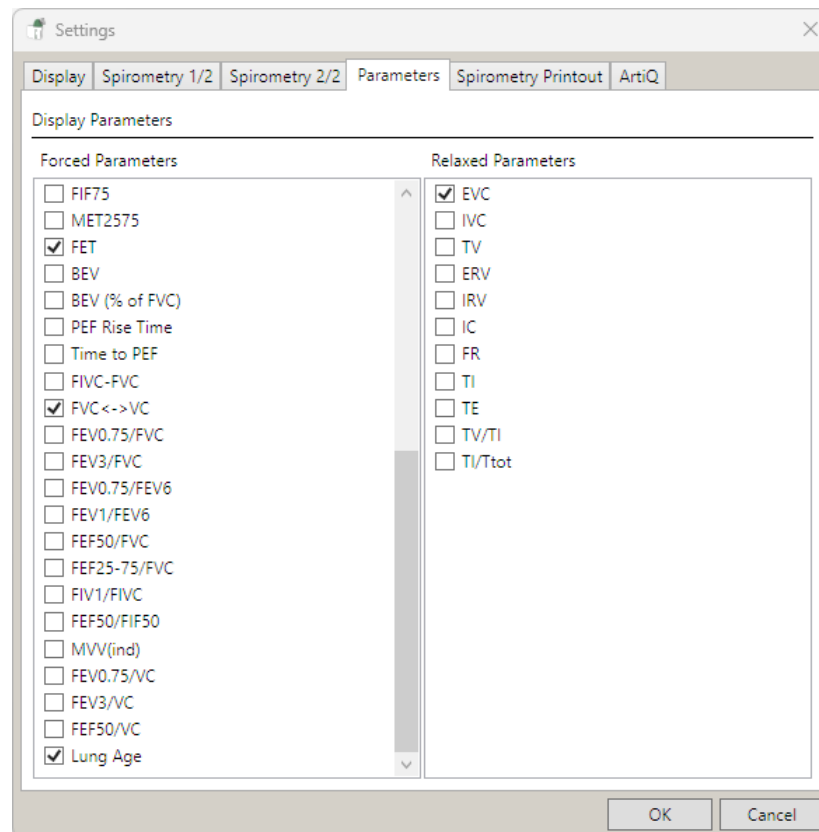
www.numed.co.uk



info@numed.co.uk

Numed Holdings Limited T/A Numed Healthcare, Company Reg No 01302868

Directors: M K Healy & S J Healy



DEDICATION • INNOVATION • TRUST

Alliance House, Roman Ridge Road, Sheffield, S9 1GB Telephone: 0114 243 3896 Fax: 0114 243 3413



www.numed.co.uk

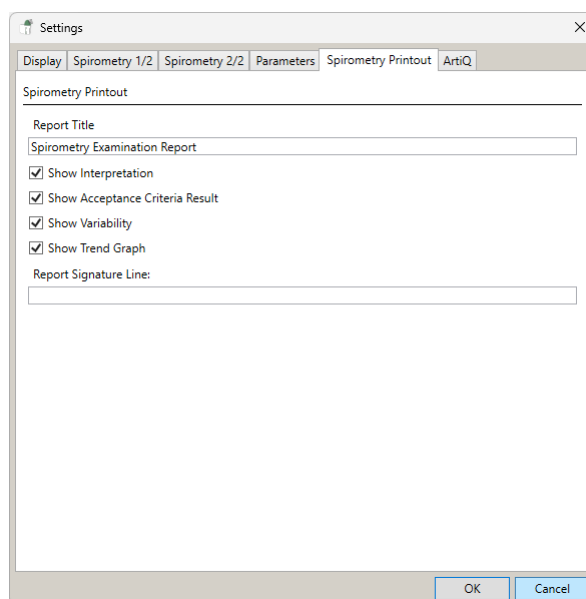


info@numed.co.uk

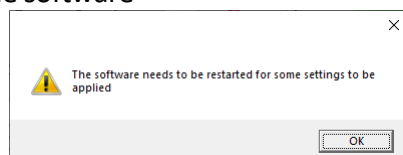
Numed Holdings Limited T/A Numed Healthcare, Company Reg No 01302868

Directors: M K Healy & S J Healy

7. Spirometry Printout, once configured click OK. The ArtiQ tab is only used if you have purchased the ArtiQ integration



8. .Click OK, then close the software



You are now able to use the SpiroConnect, if you have any queries about the settings. issues or problems connecting the device please contact Numed support via <https://www.numed.co.uk/support> or by calling 0114 399 0010 option 3.

DEDICATION • INNOVATION • TRUST

Alliance House, Roman Ridge Road, Sheffield, S9 1GB Telephone: 0114 243 3896 Fax: 0114 243 3413



www.numed.co.uk



info@numed.co.uk

Numed Holdings Limited T/A Numed Healthcare, Company Reg No 01302868
Directors: M K Healy & S J Healy